

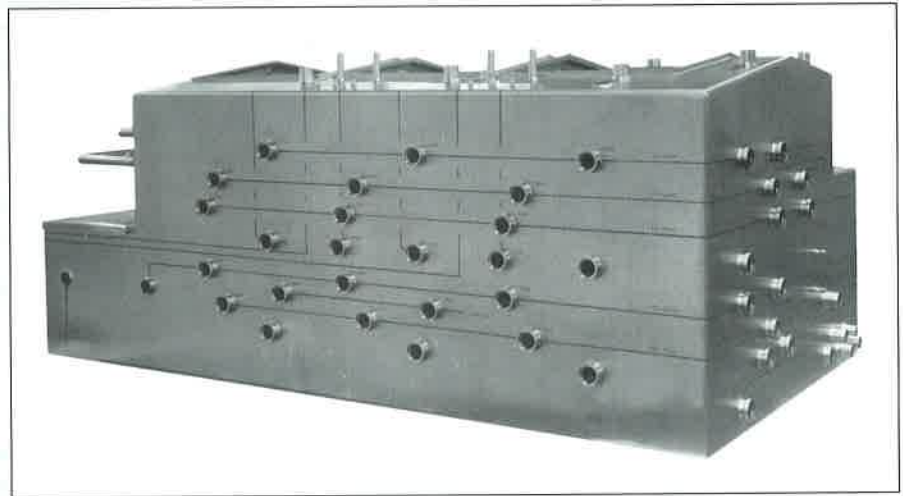
CUSTOM-DESIGNED AND STANDARD TRANSFER PANELS

Electrol Specialties Company has unmatched experience in fabricating techniques to assemble complex combinations of stainless steel tubing, panel face ports, headers (single and looped), valves, and U-bends with position feedback systems for transfer panels.

Regulatory requirements and product non-compatibility may necessitate absolute separation of several different product flow paths from one to another and from cleaning or sanitizing solutions. A product transfer and/or CIP supply panel makes it possible to assure product integrity while maintaining maximum flexibility for the production and cleaning functions.

PRODUCT VALIDATION

Electrol can make available material traceability data, weld maps, and weld logs as a part of our backup documentation package.



BENEFITS OF ESC PRODUCT AND CLEANING TRANSFER PANELS

Optimization of process flexibility and maintenance of product integrity by isolating a given flow-path from all other possible combinations.

Eliminates dead ends through use of double tube and loop-type headers.

Enables complete transfer path to be emptied of product or cleaning solutions via air blow down, gravity, or a combination of both — resulting in minimum loss when reconfiguring for next operation.

Concentrates required physical connections in an easily accessible and supervised area.

In pharmaceutical applications, through-the-wall installation permits operating area to occupy a small space within a clean room with all inter-connecting welded piping being located in other areas.

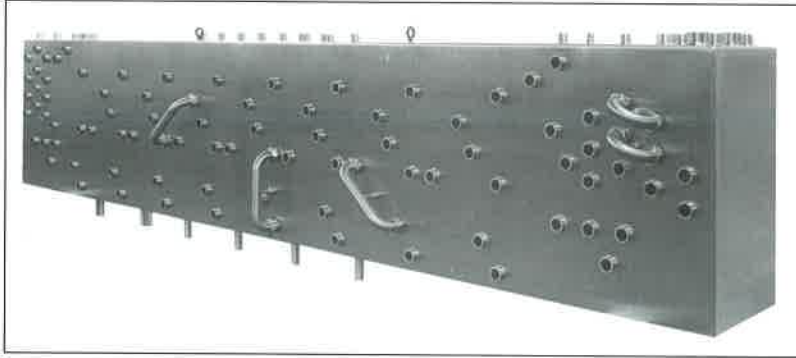
Proximity sensors mounted and wired behind panel face and magnet assemblies on U-bends provide signal output to PLC, to prevent operator error and assure integrity of connections.



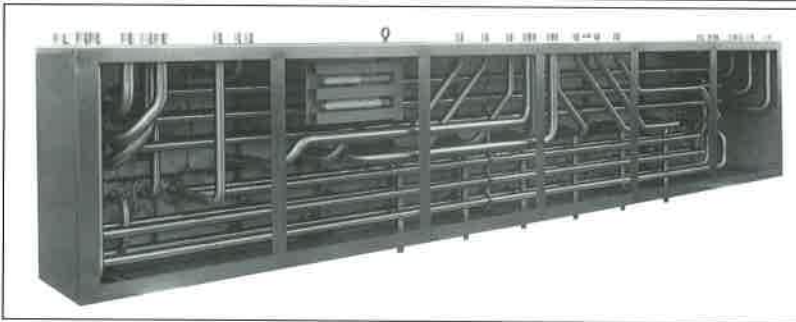
Electrol Specialties Company

441 Clark Street, South Beloit, IL 61080 815-389-2291 Fax: 815-389-2294

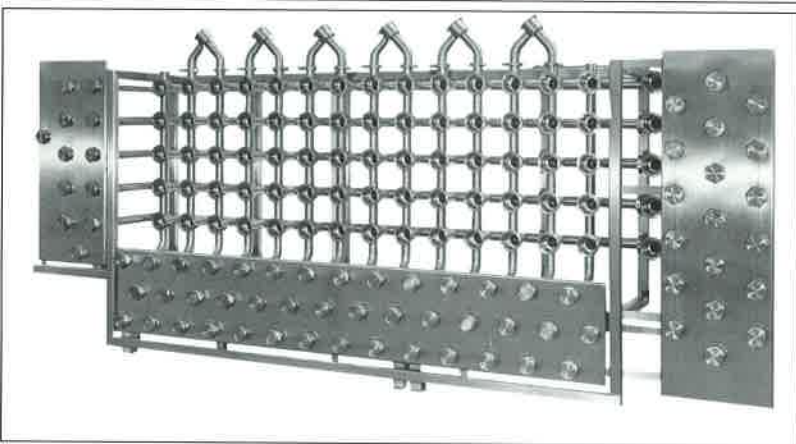
TRANSFER PANELS



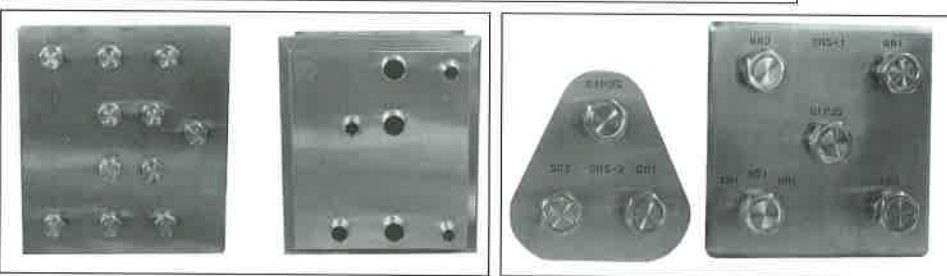
This transfer panel for a large dairy processing facility included ninety-one 2-inch size ports, proximity sensors, and U-bends with magnet assemblies.



This panel was designed to hang from the ceiling and was shipped complete with a stainless steel walkway and stairs for operator interface. The rear view shows the interior manifolding proximity sensors and terminals. Fully gasketed door panels are included.



A total of seventy-five sanitary automatic air-operated valves are an integral part of this large transfer panel.



Designed for through-the-wall installation, this transfer panel is provided with a bezel to be welded in place at the rear when the panel is installed.

Standard 3, 4, 6, and 8-port cleaning hook-up stations are available with Tri-Clamp, John Perry, bevel seat, and other types of connections.

WE MANUFACTURE

- CIP Systems
- Transfer Panels (flo-verters)
- Control Panels and Enclosures
- Holding Tubes and Constant Level Tanks
- Spray Balls and Custom Stainless Steel fabrications

ESC process and CIP control systems include state-of-the-art programmable controllers and electrical, pneumatic, hydraulic and mechanical assembly.

Our software and control capabilities provide complete system packages in which start-up and training is included.

WE ARE PRIVILEGED TO WORK WITH THE FOLLOWING INDUSTRY GROUPS

- Architects and Engineers
- Pharmaceutical and Biotech
- Fine Chemicals
- Dairy, Food Processing, and Beverage Industries
- Original Equipment Manufacturers

PRODUCT VALIDATION

Electrol can make available material traceability data, weld maps, and weld logs as a part of our backup documentation package.



Electrol Specialties Company

441 Clark Street, South Beloit, IL 61080 815-389-2291 Fax: 815-389-2294